



PEOPLE

Precollege Enrichment Opportunity
Program for Learning Excellence

UNIVERSITY OF WISCONSIN-MADISON

Virtual Academic Year Orientation

More Information is provided in the [2023/24 Handbook](#)

PRECOLLEGE SERVICE AREAS



PEOPLE Madison- any PEOPLE student who attends one of the 4 comprehensive public high schools in the Madison Metropolitan School District (MMSD). Precollege Advisors (PCAs) are assigned to each school.

PEOPLE Milwaukee- any enrolled PEOPLE student who attends one of the 17 high schools we partner with in the Milwaukee Public Schools (MPS). Precollege Advisors are assigned multiple schools in an assigned “Learning Community (LC)”

PEOPLE Madison Office
William S. Middleton Building
ATTENTION: PEOPLE Program
1305 Linden Drive, STE 240
Madison, WI 53706

Phone: 608.262.7415
Office Manager: Jazmine Zuniga-Paiz

PEOPLE Milwaukee Office
Rufus King Middle School
ATTENTION: PEOPLE Program
121 E Hadley Street, RM 234
Milwaukee, WI 53212

Phone: 414.800.1141 (Press 1)
Office Administrator: Traviance Witherspoon

PEOPLE Staff

YOUR PRECOLLEGE ADVISOR (PCA)

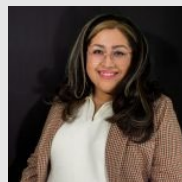
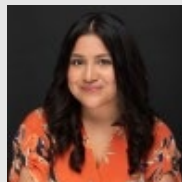
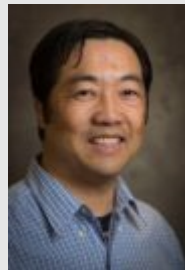
Handbook | Pages 3



MADISON

MILWAUKEE

EAST
Paul Ly Tong Pao 608-219-4834 Paul.lytongpao@wisc.edu
LA FOLLETTE
Simon Ly 608-219-3714 ly6@wisc.edu
MEMORIAL
Carl Wesley 608-852-6509 Carl.Wesley@wisc.edu
WEST
Brenda Florencio-Reyes 608-576-1937 bflorenciore@wisc.edu



Learning Community 1	
Denasha Osborn 414-305-5793 dnosborn@wisc.edu	Rufus King
Learning Community 2	
Kristina Jackson 414-559-8668 kjackson33@wisc.edu	Golda
Learning Community 3	
Donnell Brice 414-305-5771 dbrice@wisc.edu	MSL
Learning Community 4	
Pilar Olvera 414-435-8563 Polvera@wisc.edu	Reagan
Learning Community 5	
Ana Ramos Contreras 414-373-0112 Ramoscontrer@wisc.edu	Audubon Bay View Hamilton JMAC MacDowell Marshall MHSA Pulaski Riverside South Tech Vincent Washington

PRECOLLEGE LEADERSHIP

Handbook | Pages 3



PEOPLE DIRECTOR

Kia Hunter

608-206-3616

kia.hunter@wisc.edu

ASSOCIATE DIRECTOR - MADISON

Luz Arroyo Calderon

608-235-2197

arroyocalder@wisc.edu

PROGRAM MANAGER - MADISON

Daniel Alurralde

608-279-6249

alurralde@wisc.edu



ASSOCIATE DIRECTOR - MILWAUKEE

Simone Sease

608-280-1635

Simone.sease@wisc.edu

PROGRAM MANAGER - MILWAUKEE

Monica White

414-305-4958

mawhite2@wisc.edu

PEOPLE Program Overview



PARTNERS IN COLLEGE ACCESS & SUCCESS

The Precollege Enrichment Opportunity Program for Learning Excellence (PEOPLE) is a college prep scholarship program designed for low-income and potential first-generation college students.

Four areas of growth:

- Build and Master Academic Knowledge
- Build Cognitive Skills and Strategies
- Build Self-Management Skills
- Build Knowledge about College through Experiential Learning



The PEOPLE Scholarship

It's important to note that completion of the precollege program **DOES NOT** guarantee admission to UW-Madison, nor does it guarantee the PEOPLE Scholarship.

Core Programming

Goals for College Readiness

- Earn a 23 or higher on the ACT
- Earn a 3.0 or higher each semester.
- Apply to 3 UW System schools, including UW Madison.
- Attend ACE at an 85% attendance rate
- Attend School at 98% Attendance Rate
- Meet/Talk with your PCA often



3.0+ Scholar Program

- **Semester GPA**
 - Lapel Pins are earned each year that a student earns a 3.0 or higher for at least one of the semesters; students can earn 1 lapel pin each academic year
- **Cumulative GPA**
 - *Certificate* earned if a student has a 3.3 or higher cumulative GPA through the end of their freshman year
 - *Lapel Pin Display Box* earned if a student has a 3.3 or higher cumulative GPA through the end of their sophomore year
 - *PEOPLE Varsity Sweater* earned if a student has a 3.3 or higher cumulative GPA through the end of their junior year
 - *PEOPLE Honor Cords* are earned if a student has a 3.3 or higher cumulative GPA through the end of their senior year

PEOPLE PRECOLLEGE UNIT SERVICES

- **PEOPLE Core Programming**
 - Precollege Advising with a PEOPLE Precollege Advisor (PCA)
 - Quarterly Advising Sessions – **Mandatory Programming**
 - Academic Centers for Enrichment (ACE) Sites – **Must Maintain 85% Attendance**
 - Virtual Writing Center (Juniors and Seniors) – **At least two sessions required**
 - Senior Cohort – **Mandatory Programming** (*Sunday, Oct. 1st*)
 - Special Programming for College Readiness and Engagement
- **UW System College Tours – Must complete 2 tours with PEOPLE***
- **PEOPLE Summer University – Mandatory Programming**
- **All virtual programming will require cameras to be turned on for attendance to count**

Academic Centers for Enrichment (ACE)

- PEOPLE's Academic Center for Enrichment (ACE) provides mentorship, college readiness engagement, and academic enrichment services to students in a safe, productive, and positive learning environment.
 - Promote a college-going culture and help students build self-management skills.
 - Promote cognitive development and skills.
 - Provide tutorial services in the core subject areas which are: Math, Science, Social Studies, English [reading & writing], and World Language.
- **ACE is mandatory for all PEOPLE students**
- A typical day at ACE consists of the following:
 - Community Circle Activity
 - PEOPLE 2 People Engagement Lesson
 - Academic Olympics and Virtual Writing Center (Juniors)
 - Virtual Writing Center and UW Placement Testing Prep (Seniors)
 - Other College Readiness Activities
 - Homework Mentorship



23-24 PEOPLE ACE Logistics

ACE Opens
the week of:
Oct. 9th

Madison ACE Logistics

- In Person sites are located at **East, LaFollette, Memorial, and West.**
- Site occurs Monday and early release days 2-5 PM; Tues. – Thurs. from 3 – 6 PM

Milwaukee ACE Logistics

- In Person sites are located at **Golda, King, MSL, and Reagan** from 3:30 – 6 PM
- All other schools will attend ACE virtually via Microsoft Teams from 4:30 – 7 PM

All students are required to attend ACE on either Monday or Tuesday

- Students must stay the entire ACE time of the day they choose to attend.
- **Students with a 2.99 or below must also attend on a Wednesday or Thursday**
- Virtual Homework Mentorship will be offered by request to you PCA.
- Juniors/Seniors might be required to attend additional days during the week to complete other college readiness activities.

PEOPLE Summer University (PSU) 2024



- **PSU I – Rising 9th Grade** | 1 Day Commuter Program
 - Saturday, June 29, 2024
- **PSU II – Rising 10th Grade** | 6 Day Residential Program
 - Sunday, June 9th, 2024 – Friday, June 14th, 2024
- **PSU III – Rising 11th Grade** | 10 Day Residential Program
 - Wednesday, June 19th, 2024 – Friday, June 28th, 2024
- **PSU IV – Rising 12th Grade** | 2.5 Week Residential Program
 - Sunday, July 7th, 2024 – Tuesday, July 23rd, 2024

PEOPLE Expectations

STUDENT EXPECTATIONS



Attendance

- Attend ACE Site 1 Day/Week
- Attend Mandatory Events
 - Orientations (2x/Year)
 - Advising Sessions (4x/Year)
 - College Tours (at least 2)
- Senior Events
 - Complete *Senior Commitment* to earn \$500 educational stipend
 - Parents invited to SENIOR COHORT on **Sunday Oct. 1** (Event hosted in Madison)
- PEOPLE Summer University (PSU)

Academics

- Keep a minimum 2.75 GPA
- Communicate with your PCA about any academic/social struggles
- Two ACT exams are recommended between your Junior and Senior Year
- Please be sure to send PEOPLE your ACT score.

PEOPLE's ACT code is 4638

Participation

- Build good rapport with your PCA
- Take advantage of other PEOPLE programming beyond mandatory events
- Abide by student behavior standards (handbook pg. 17)

PARENT/GUARDIAN EXPECTATIONS

- Be familiar with and review the current year's handbook and pay special attention to policies and student behavior expectations.
- Reinforce positive behavior and acknowledge your student for demonstrating appropriate conduct.
- If misconduct escalates, cooperate with the school/PEOPLE as a collaborative partner to address student's needs and student accountability.
- Ensure the student attends school and ACE regularly and is on time. Aim for school attendance at 97% or better.
- Provide a home environment that encourages respect for PEOPLE and the learning process.
- Take corrective action when requested by PEOPLE staff and administrators.
- Attend all parent-related meetings including orientations.
- Update all personal information including contact information.
- Parents should encourage a proper virtual learning environment for your student; if applicable.
- Parents should encourage timely submission of assignments.



FALL PARENT
PROFESSIONAL
DEVELOPMENT
ZOOM LINK

Save the date!

Thursday, October 26th

6pm-7pm

Virtual via Zoom

PEOPLE Policies and Safety

Academic Policy Overview

- 2.75 minimum GPA for admission to PEOPLE and to maintain a positive academic status
- PEOPLE uses *semester* GPA for all grade reviews.
- Quarter 3 Grade Review Policy
 - Students who are on Strict Academic Probation after the 3rd Quarter Advising session (February) will be closely monitored. If at the 4th quarter Advising Session (April), the student has achieved a 3.0 GPA they can then register for PEOPLE Summer University.

Semester GPA	PEOPLE Status	Details
Above 3.00	Good Standing	Students in Good Standing are eligible for all PEOPLE programming and services.; and are academically are on track for college.
2.99 – 2.75	Academic Watchlist	Students on Academic Watchlist are advised closely to ensure that they continue to meet PEOPLE GPA requirements and are academically on track for college.
2.74 – 2.50	Academic Probation	Students on Academic Probation must earn at least 2.75 semester GPA the following semester to be moved to <i>Academic Watchlist</i> or <i>Good Standing</i> . If a student does not earn at least a 2.75 semester GPA they will be moved to <i>Strict Probation</i> .
2.49 or below	Strict Academic Probation	Students on Strict Academic Probation must earn a 3.00 semester GPA* or higher to be moved to <i>Good Standing</i> . *Increased academic improvement is required to protect the student's cumulative GPA, which is reviewed in college admissions. If a student does not earn at least a 3.0 semester GPA they will be reviewed for program dismissal.

ATTENDANCE POLICY

- Attendance is reviewed twice annually, in March/April and July/August. Students who have not met the ACE attendance requirement of 85% or better will be placed on ***Attendance Probation***.
- The following events, in addition to ACE, are mandatory:
 - Academic Year/Summer Orientation
 - Senior Cohort
 - Quarterly Advising Sessions
 - UW-System Campus Visits | @ least 2 visits with PEOPLE
 - PEOPLE College Power Hour Series
 - PEOPLE Summer University (PSU)
 - Senior Send-Off – *Senior Graduation Ceremony*

PROGRAM DISCIPLINARY, DISMISSAL, AND APPEAL PROCESSES

- **Attendance Dismissal:** If your child has been dismissed from PEOPLE for attendance but has extenuating circumstances, the student and/or parent/guardian must submit a written appeal letter within 3 weeks of receiving the termination notice.
- **Behavior Dismissal:**
 - Disciplinary Process: Immediately following an incident, PEOPLE staff will use their best judgment to determine follow-up action, which could include:
 - Staff/Student Conference and/or Parent/Guardian Contact
 - Parent/Guardian Pre-disciplinary Meeting with Associate Director and/or other appropriate staff
 - Pre-disciplinary Meetings could result in 1) No Discipline Warranted, 2) a Letter of Expectation issued to the student/family 3) Behavior Probation, or 4) Program Dismissal
- **Academic Dismissal:** There is no formal appeal for academic dismissals.

STUDENT SAFETY



SUPERVISION

- PEOPLE students are supervised at a 1:18 ratio or 1:10 ratio on field trips.
- Any special events a student participates in will require a signed permission slip from their parent/guardian.

MANDATORY REPORTING

- PEOPLE, as well as all UW-Madison personnel, are mandated reporters.
- This means all University employees are required by law to report if they had a reasonable cause to suspect that a child has been abused or neglected or has been threatened with abuse or neglect that is likely to occur.

MEDICAL EMERGENCIES

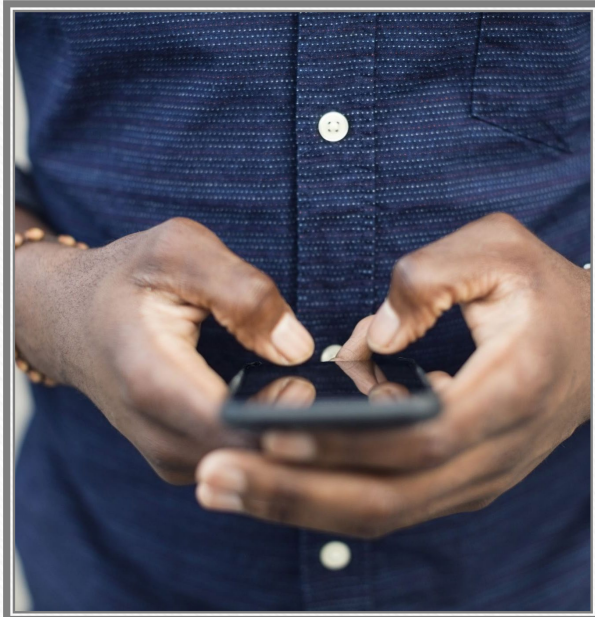
- If there is an emergency, parents or guardians will be contacted immediately. If a parent/guardian cannot be reached, we will call the emergency contact number listed on your student's records.
- Medications cannot be administered by our staff. However, please let us know if your student does take medication at home and must self-administer medication while on campus or at site.

INCLEMENT WEATHER

- Wisconsin weather can be unpredictable! In the event school is cancelled for inclement weather, your Precollege Advisor will contact families to inform them of ACE site closings as soon as possible.
- If school is closed for inclement weather, ACE site will be too.

Stay Connected with PEOPLE

Communication Best Practices



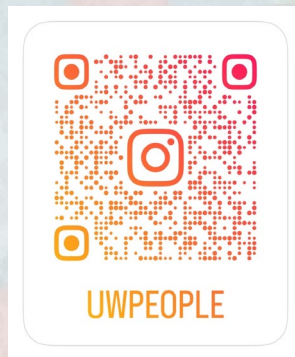
- PEOPLE will provide a Calendar of Events covering September – July
- PEOPLE will provide event flyers at least 3 weeks prior to the event
- PEOPLE will provide event reminders 1 week and 1 day prior to the event
- PEOPLE staff may need 48 business hours to respond to communication
 - Please note that October, April - July are peak times for staff
- Check your email OFTEN, it is PEOPLE's primary method of communication
- Ensure you provide your PCA with updated contact information

PEOPLE on Social Media

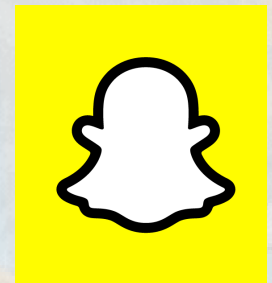
- 35% of admissions offices say they visit applicant's social media page
- Positive Social Media
- Negative Social Media



Follow us @uwpeople



Follow us @UWPEOPLE





THANK YOU FOR ATTENDING!

SAVE THE DATE

SENIOR COHORT
SUNDAY, OCT. 1ST

BEFORE YOU GO...

- PLEASE DON'T FORGET TO FILL OUT THE **GOOGLE FORM** FOR OUR ATTENDANCE RECORDS
- STUDENTS **MISSING PAPERWORK** WILL RECEIVE AN EMAIL FROM THEIR PCA WITH FURTHER INSTRUCTIONS
- HANDBOOK AND PRESENTATION AVAILABLE FOR DOWNLOAD ON OUR WEBSITE

<https://peopleprogram.wisc.edu/>